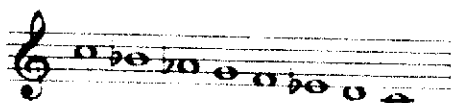
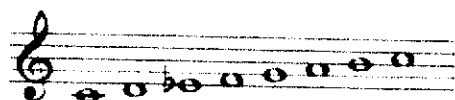


MELODIC MINOR SCALE AND ITS MODES

GRADE	NAME	NOTES	NOTES TRANSPOSED IN C
I	JAZZ MINOR		
II	DORIAN b9		
III	LYDIAN AUGMENTED		
IV	LYDIAN DOMINANT		
V	MIXOLYDIAN b6		
VI	SEMILOCRIAN		
VII	SUPERLOCRIAN		

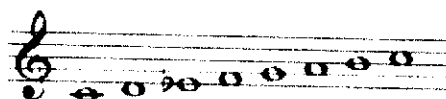
Classical Melodic Minor scale has two forms: ascending and descending:



the descending form correspond to the natural minor scale.

In modern music, however, even the ascending form can be used to descend.

JAZZ MINOR



Alternative names: Melodic Minor Ascending, Minor Major, Modern Minor, Ionian flat 3, Dorian maj7, Ipoionian, Dorian major 7

It starts from the **first** grade of melodic minor scale

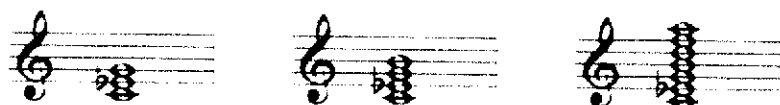
The name *Minor Major* is because this mode starts like a minor mode and ends like a major one.

NATURAL MINOR	C		D	E \flat		F		G	A \flat		B \flat		C
HARMONIC MINOR	C		D	E \flat		F		G	A \flat			B	C
MELODIC MINOR	C		D	E \flat		F		G		A		B	C

Structure: **2122221**

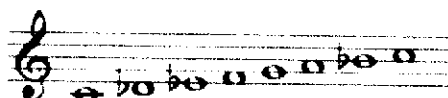
chords over first notes:

Triad: Seventh chord: Complete chord:
 minor minor with major seventh



Chord symbols: **Cm, Cm(maj7), Cm6, Cm[^], Cm9(maj7), Cm[^]9, Cm6/9**

DORIAN $\flat 9$



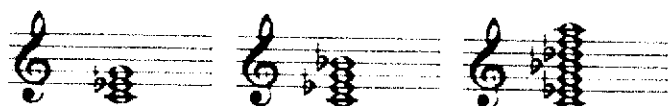
Alternative names: **Dorian flat 9, Phrygian sharp 6, Javanese**

It starts from the **second** grade of melodic minor scale

Structure: **1222212**

chords over first notes:

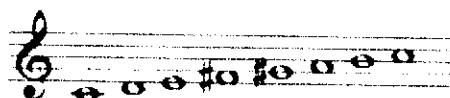
Triad: Seventh chord: Complete chord:
 minor minor seventh



Chord symbols: **Cm, Cm7, Cm7(b9), Cm11(b9), Cm13(b9)**

Enharmonic chord symbols: **Csus(b9)**

LYDIAN AUGMENTED



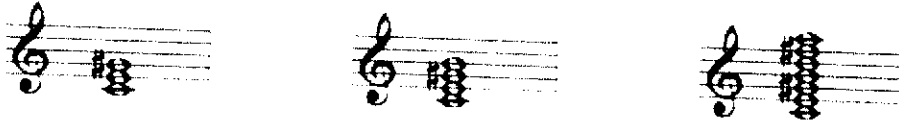
Alternative names: **Lydian sharp 5**

It starts from the **third** grade of melodic minor scale

Structure: **2222121**

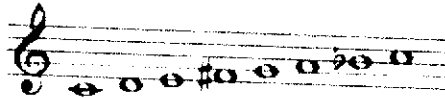
chords over first notes:

Triad:	Seventh chord:	Complete chord:
augmented	major seventh with augmented fifth	



Chord symbols: C+, C+(maj7), C^+, C9+(maj7), C^(#5), Cmaj7(#5), C^(#5 #11)

LYDIAN DOMINANT



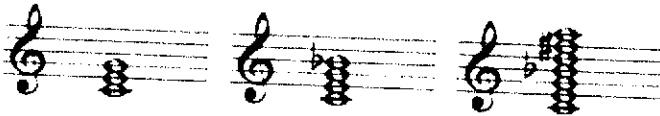
Alternative names: **Overtone, Lydian flat 7, Mixolydian sharp 11, Mixolydian #4**

It starts from the **fourth** grade of melodic minor scale

Structure: **2221212**

chords over first notes:

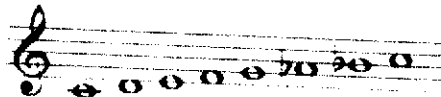
Triad:	Seventh chord:	Complete chord:
major	dominant	



Chord symbols: C, C7, C9, C7(#11), C9(#11), C13(#11)

Enharmonic chord symbols: C7(b5)

MIXOLYDIAN b13



Alternative names: **Mixolydian flat 6, Hindu, Aeolian sharp 3, Aeolian Dominant, Hindustan**

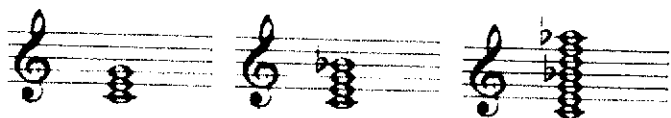
It starts from the **fifth** grade of melodic minor scale

Structure: **2212122**

As we can see from the structure, this is a palindromic mode

chords over first notes:

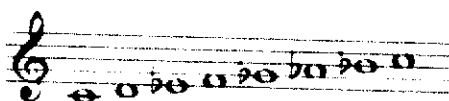
Triad:	Seventh chord:	Complete chord:
major	dominant	



Chord symbols: C, C7, C9, C7(b13), C9(b13), Csus, C7sus, C9sus

Enharmonic chord symbols: C7(#5)

SEMILOCRIAN



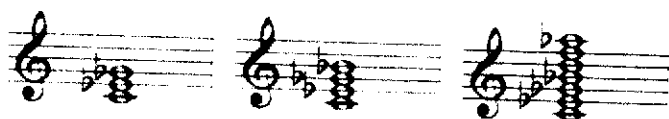
Alternative names: **Locrian natural 2, Half Diminished, Aeolian flat 5, Locrian #2**

It starts from the **sixth** grade of melodic minor scale

Structure: **2121222**

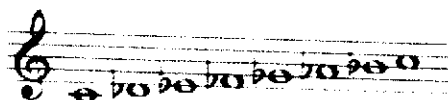
chords over first notes:

Triad:	Seventh chord:	Complete chord:
diminished	half diminished	



Chord symbols: Cm7(b5), CØ, Cm9(b5), CØ9

SUPERLOCRIAN



Alternative names: **Altered, Ravel, Diminished Whole-tone, Locrian flat 4**

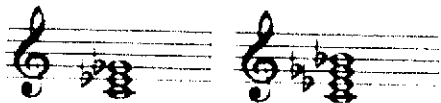
It starts from the **seventh** grade of melodic minor scale

The name *Diminished Whole-tone* is because this mode starts like a diminished mode and ends like a whole-tone one.

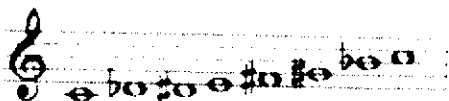
Structure: **1212222**

chords over first notes:

Triad:	Seventh chord:
diminished	half diminished

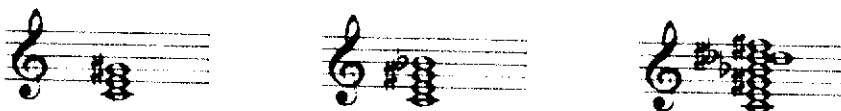


Enharmonic interpretation:



chords over first notes:

Triad:	Seventh chord:	Complete chord:
augmented	dominant with augmented fifth	



Enharmonic chord symbols: *C7alt*, *C7(b5)*, *C7(#5)*, *C+7*, *C7(b5 b9)*, *C7(#5 #9)*, *C7(b9 #9 #11 b13)*, ecc.