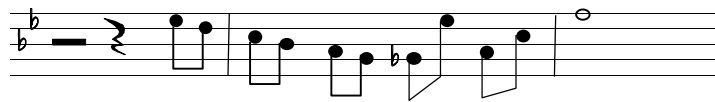
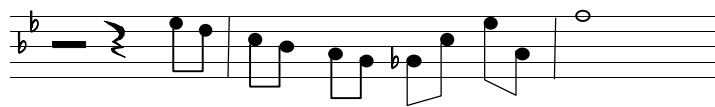
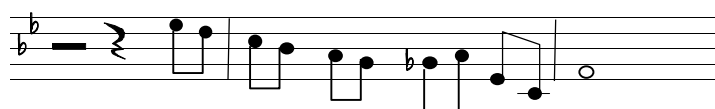
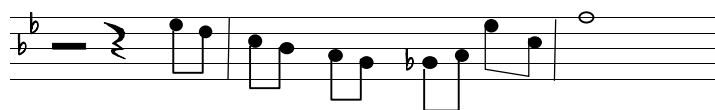
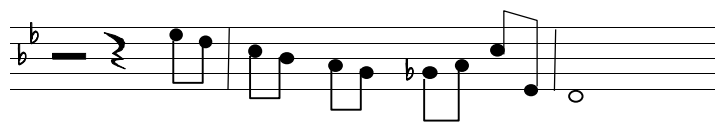
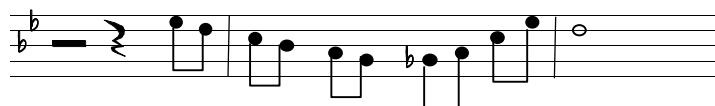


Cm7

F7

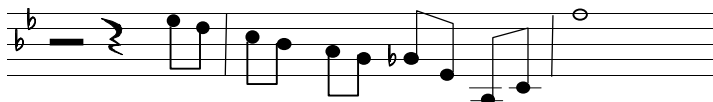
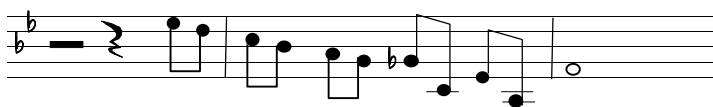
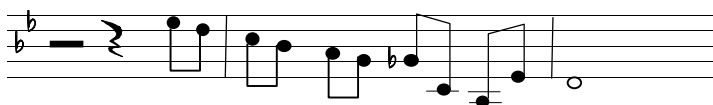
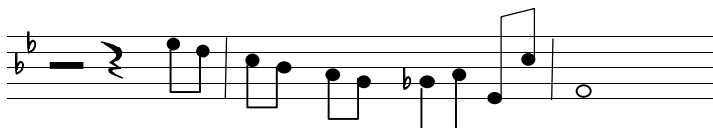
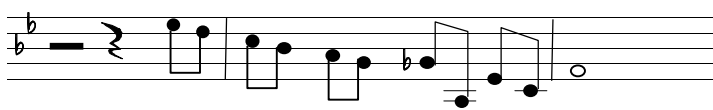
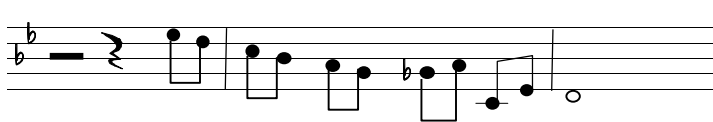
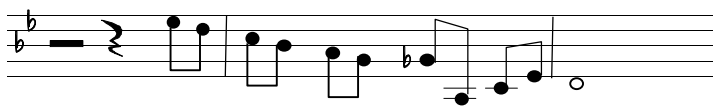
Bb



Cm7

F7

Bb



3 notes of dim

The image displays a 10x2 grid of musical staves, each containing a variation of a specific melodic sequence. The sequence begins with a half rest followed by a quarter note G4. This is followed by eighth notes A4, B4, and C5, which are then tied to a half note D5. The variations are created by altering the accidentals of the notes and the phrasing marks used.

Staff	Staff 1	Staff 2
1	Half rest, G4, A4, B4, C5, D5	Half rest, G4, A4, B4, C5, D5
2	Half rest, G4, A4, B4, C5, D5	Half rest, G4, A4, B4, C5, D5
3	Half rest, G4, A4, B4, C5, D5	Half rest, G4, A4, B4, C5, D5
4	Half rest, G4, A4, B4, C5, D5	Half rest, G4, A4, B4, C5, D5
5	Half rest, G4, A4, B4, C5, D5	Half rest, G4, A4, B4, C5, D5
6	Half rest, G4, A4, B4, C5, D5	Half rest, G4, A4, B4, C5, D5
7	Half rest, G4, A4, B4, C5, D5	Half rest, G4, A4, B4, C5, D5
8	Half rest, G4, A4, B4, C5, D5	Half rest, G4, A4, B4, C5, D5
9	Half rest, G4, A4, B4, C5, D5	Half rest, G4, A4, B4, C5, D5
10	Half rest, G4, A4, B4, C5, D5	Half rest, G4, A4, B4, C5, D5