

Leavin'

Ballad Bossa w/ Backbeat ♩ = 90

Joel Fass

Intro (whistle)
C₉

Cmaj9(#5)



A C₆ Em₇ Am₇ D₇(b₉) Gm₇ C₉



Long a - go__ when the music first played Said I'd stay for - e - ver that was then but today I'm

Fm₆ B_b7 Am₇ A_b7 Gm₇ C₉ Fm₆ B_b1N.C.



Lea - vin'__ this place I love__ Lea - vin'__ Be-cause I'm

C₆ Em₇ Am₇ D₇(b₉) Gm₇ C₉



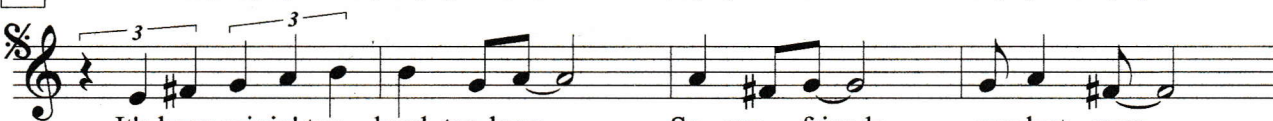
Bong - in'__ to lie in the shade A change of scene would be like cool lemonade

Fm₆ Bm₇(b₅) E₇ Am₇ F#m₇ B₇(b₉)



Lea - vin'__ for this dream won't go__

B Em₇ C#m₇(b₅) F#m₇(b₅) C₁₃ B₇(b₉) Em₇ Am₇(b₅) D₇(b₉)



It's been rainin' too hard too long__ So my friends__ one last song__

Leavin' means I can start to mend Find a friend__ start a trend__

G₆ F#dim Em₇ Am₇(b₅) D₇(b₉) Dm₁₁(b₅) N.C. G₇(b₉) N.C.



raise the glass and sing__ a__ long__ and though I'm

and the mu - sic plays__ a__ gain__ and may - be

C C₆ Em₇ Am₇ D₇(b₉) Gm₇ C₉



grie - vin'__ for I'll miss her so__ it just won't work out I just have to go

some - day__ I'll be back this way I'll see my love I might even stay!

2

Leavin'

Fm6

Bm7(b5)

E7(#9)

Am7

C9

Fm9 Bb13

34

Grie - vin' _____ but it's time to go! _____ Lea - vin' **fine** on last x only

Some - day _____

D

C6

Em7

Am7

D7(b9)

Gm7

C9

INSTRUMENTAL SOLO

Fm6

Bb7

Bm7(b5)

E7(b9)

Am7

F#m7B7(b9)

42

1. 2.

D.S. al Fine

Leavin'

Joel Fass

Ballad Bossa w/ Backbeat ♩ = 90

Intro (whistle)
C₉

Cmaj9(#5)



A C₆ Em₇ Am₇ D₇(b₉) G₇ C₉



Long a - go__ when the music first played Said I'd stay for - e - ver that was then but today I'm

F_m6 B_b7 Am₇ A_b7 G_m7 C₉ F_m6 B_b1 N.C.



Lea - vin'__ this place I love__ Lea - vin'__ Be-cause I'm

C₆ Em₇ Am₇ D₇(b₉) G₇ C₉



Long - in'__ to lie in the shade A change of scene would be like cool lemonade

F_m6 B_m7(b₅) E₇ Am₇ F_{#m}7 B₇(b₉)



Lea - vin'__ for this dream won't go__

B Em₇ C_{#m}7(b₅) F_{#m}7(b₅) C₁₃ B₇(b₉) Em₇ Am₇(b₅) D₇(b₉)



It's been rainin' too hard too long__ So my friends__ one last song__

Leavin' means I can start to mend Find a friend__ start a trend__

G₆ F_{#dim} E_m7 Am₇(b₅) D₇(b₉) D_m11(b₅) N.C. G₇(b₉) N.C.



raise the glass and sing__ a__ long__ and though I'm

and the mu - sic plays__ a__ gain__ and may - be

C C₆ Em₇ Am₇ D₇(b₉) G₇ C₉



grie - vin'__ for I'll miss her so__ it just won't work out I just have to go

some - day__ I'll be back this way I'll see my love I might even stay!